



**SILTECH CORPORATION**  
225 Wicksteed Avenue  
Toronto, Ontario, Canada, M4H 1G5  
(416)424-4567 (Tel) (416)424-3158 (Fax)

TECHNICAL DATA SHEET

**Silwax® D02**  
Ethyl Methicone

**DESCRIPTION**

**Silwax D02** is a patent pending low carbon content alkyl methicone designed to have the dry feel of cyclomethicone, but is free of D<sub>4</sub> and D<sub>5</sub>. **Silwax D02** is a polymer under REACh and has a CAS number of 63148-54-9. **Silwax D02** has an INCI name of Ethyl Methicone.

**TYPICAL PROPERTIES**

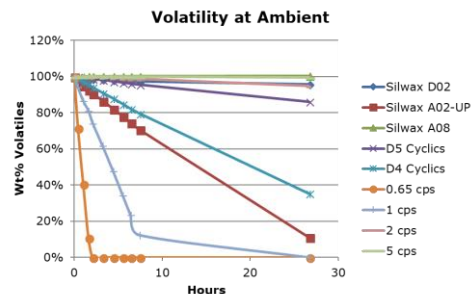
<b>Appearance</b>	Clear Liquid
<b>Viscosity@ 25°C, cps</b>	5-12
<b>Active Content, %</b>	100
<b>Colour, Gardner</b>	< 1
<b>Solubility, (1%/10%):</b>	
- Water	- Insoluble/Insoluble
- Triglycerides	- Soluble/Soluble
- IPA	- Soluble/Soluble
- Mineral Oil	- Soluble/Soluble
- Cyclomethicone (D <sub>5</sub> )	- Soluble/Soluble
- 350 cps Silicone Fluid	- Soluble/Soluble

**USES AND APPLICATIONS**

**Silwax D02** provides excellent dry feel and lubricity in personal care formulations. The key product application is as a replacement for Cyclomethicone (D<sub>4</sub> and D<sub>5</sub>), in applications including, but not limited to, antiperspirants, hair glossers, resins, moisturizers, lotions and pigmented products. The alkyl groups make it more compatible with many organic systems.

For non-volatile uses, you can also replace D<sub>5</sub> by blending 1-5% **Silwax D02** into low viscosity esters and triglycerides. The blend is more "siliphilic" and provides a skin feel similar to cyclomethicone. This is a very cost effective cyclomethicone replacement.

The chart plots weight loss as a function of time. Equal weights of samples were placed side by side in aluminum weighing pans and left on the benchtop at room temperature. The samples were weighed hourly four 8 hours and then a final reading at 27 hours was taken. The volatility of **Silwax D02** closely matches that of 2 cps silicone oil and is very similar to D<sub>5</sub>.



**SAFETY**

Before handling, read the Material Safety Data Sheet and container label for safe use, physical and health hazard information

**STORAGE AND SHELF LIFE**

When stored in the original, unopened containers between 10 and 40°C, **Silwax D02** has a shelf life of 36 months from date of manufacture.

**PACKAGING**

**Silwax D02** is available in 20 Kg and 200 Kg containers.

**LEGAL DISCLAIMER**

Siltech Corporation believes that the information in this technical data sheet is an accurate description of the typical uses of the product. Siltech Corporation, however, disclaims any liability for incidental or consequential damages, which may result from the use of the product that are beyond its control. Therefore, it is the user's responsibility to thoroughly test the product in their particular application to determine its performance, efficacy and safety. Nothing contained herein is to be considered as permission or a recommendation to infringe any patent or any other intellectual property right.

**Silwax®** is a registered trademark of Siltech Corporation, Toronto, Ontario, Canada.